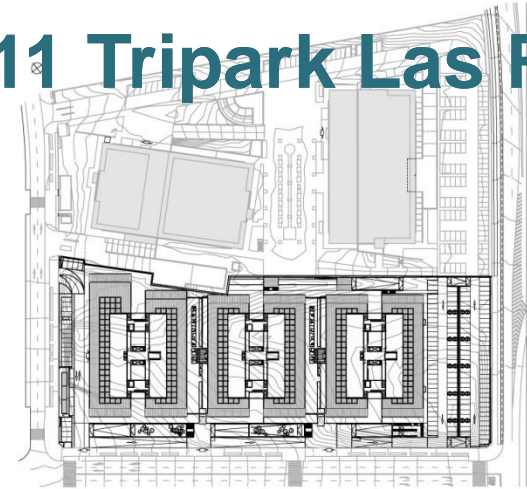


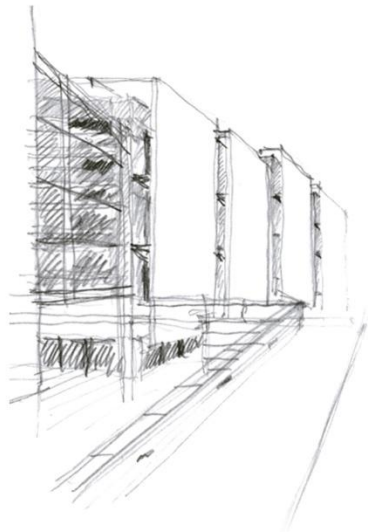
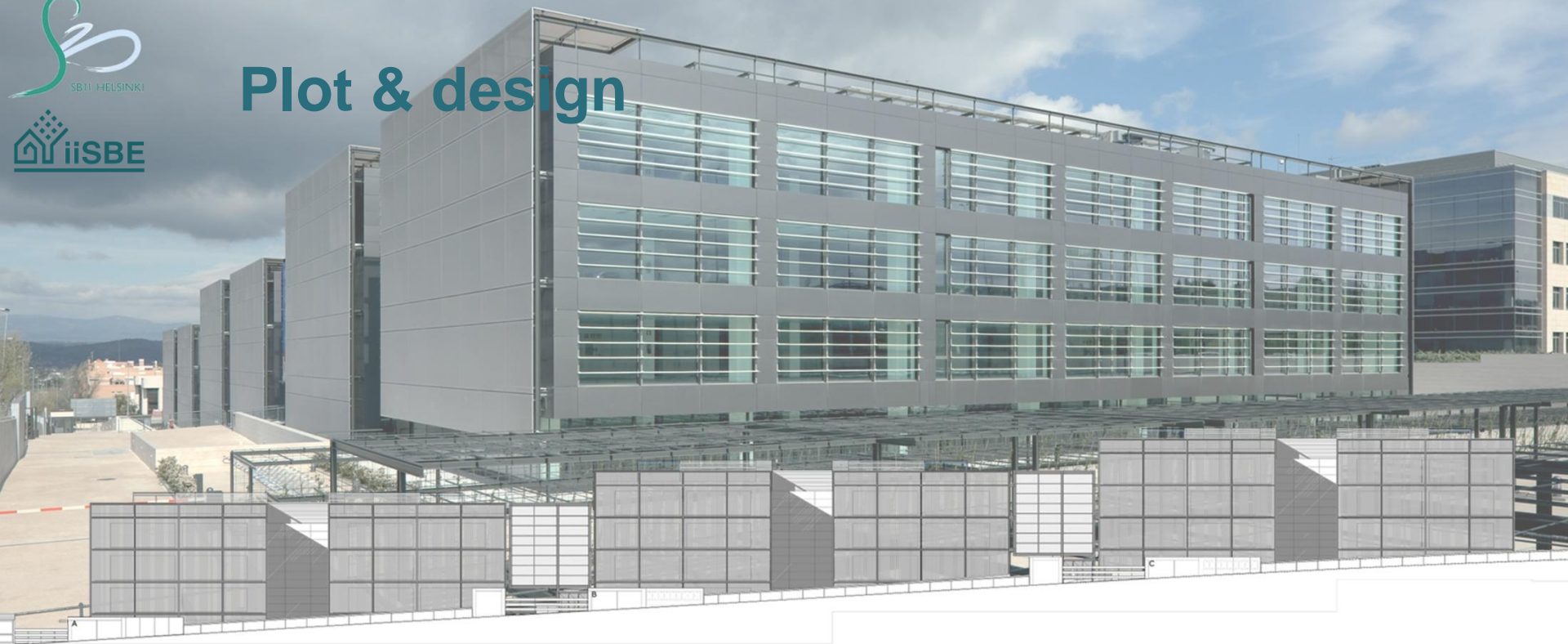


SBC11 Tripark Las Rozas

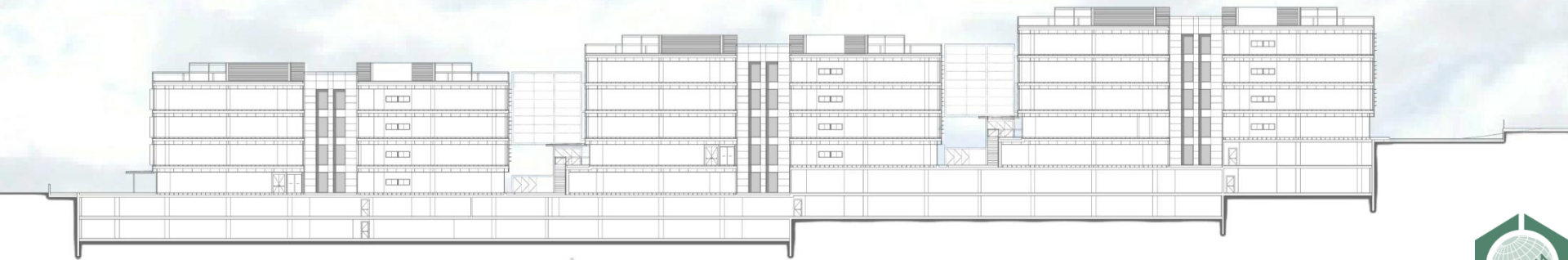
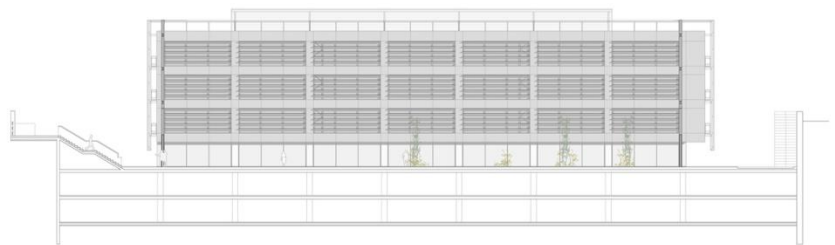


- » **Building Type / Use**
office
- » **Designer**
allende arquitectos
- » **Owner**
Hines Las Rozas Business Centre
- » **Developer**
allende arquitectos
- » **Construction year**
2006-2009
- » **Location**
Madrid. Spain

Plot & design



Courts



Roof & facade protection

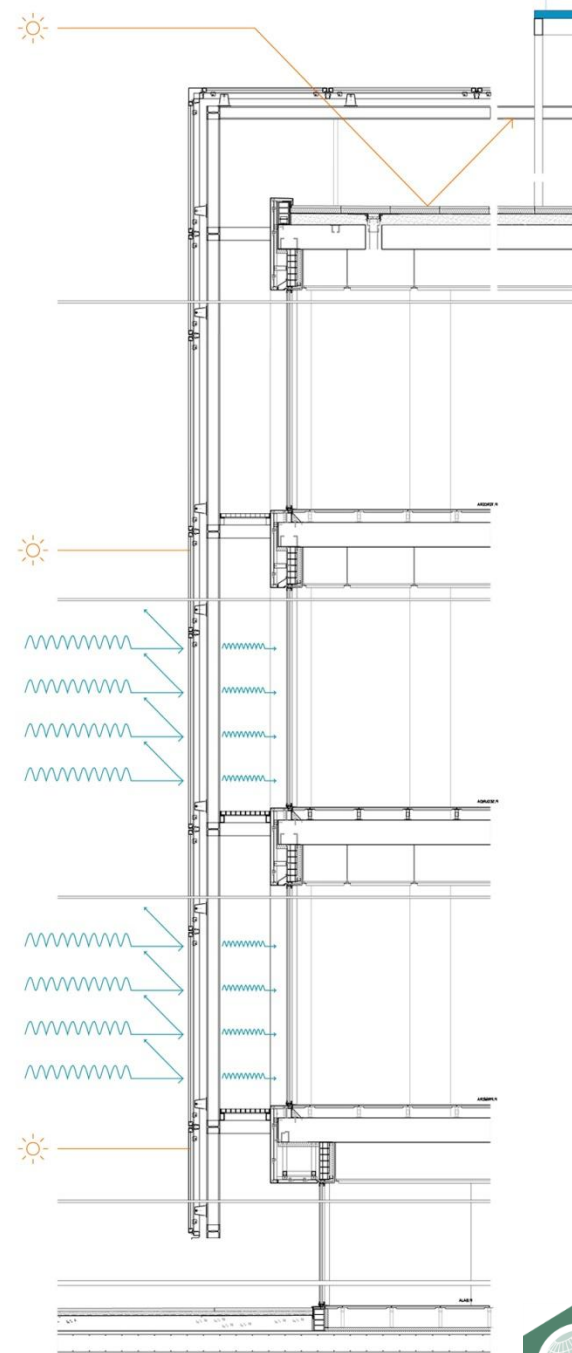
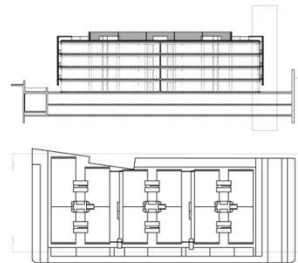
Textile tensed screens

Solar transmission (ts): 23%

Solar reflection (rs): 37%

Solar absorption (as): 40%

Solar factor (fs): 28%

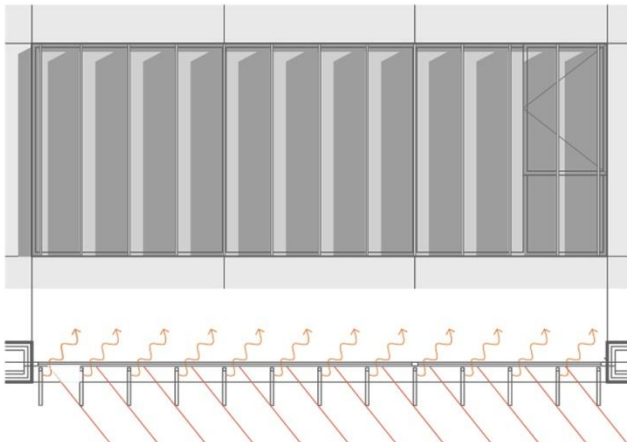


Louvers

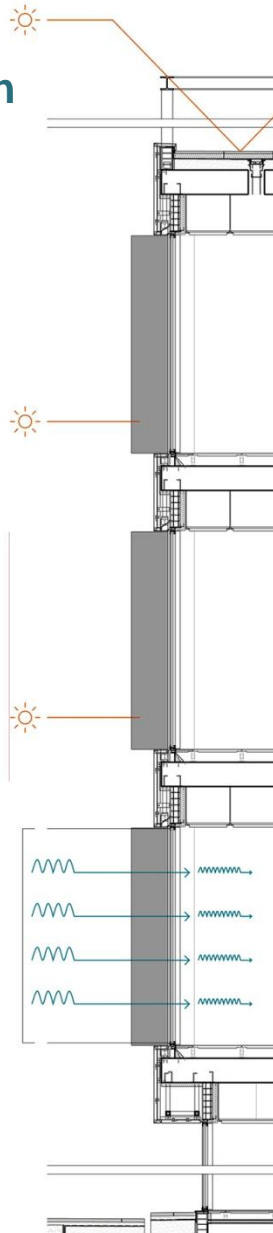
SE & NE facade protection



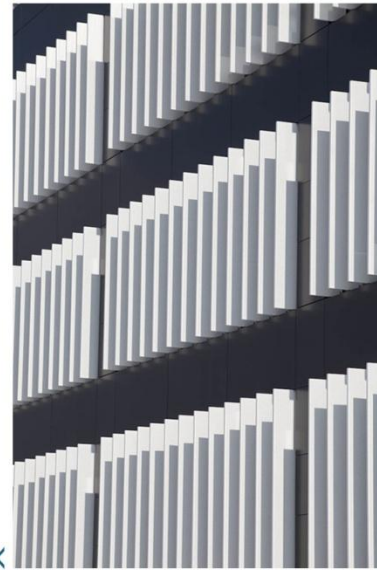
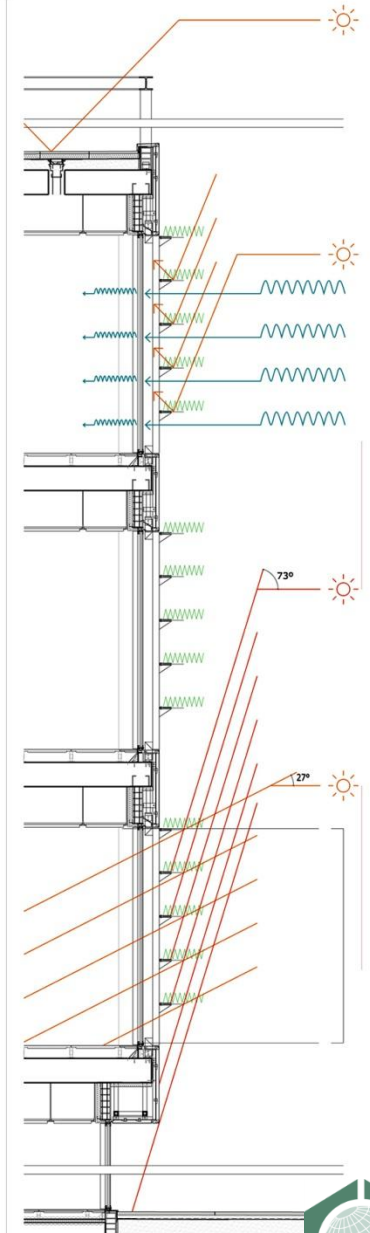
Vertical louvers protection detail



SE facade

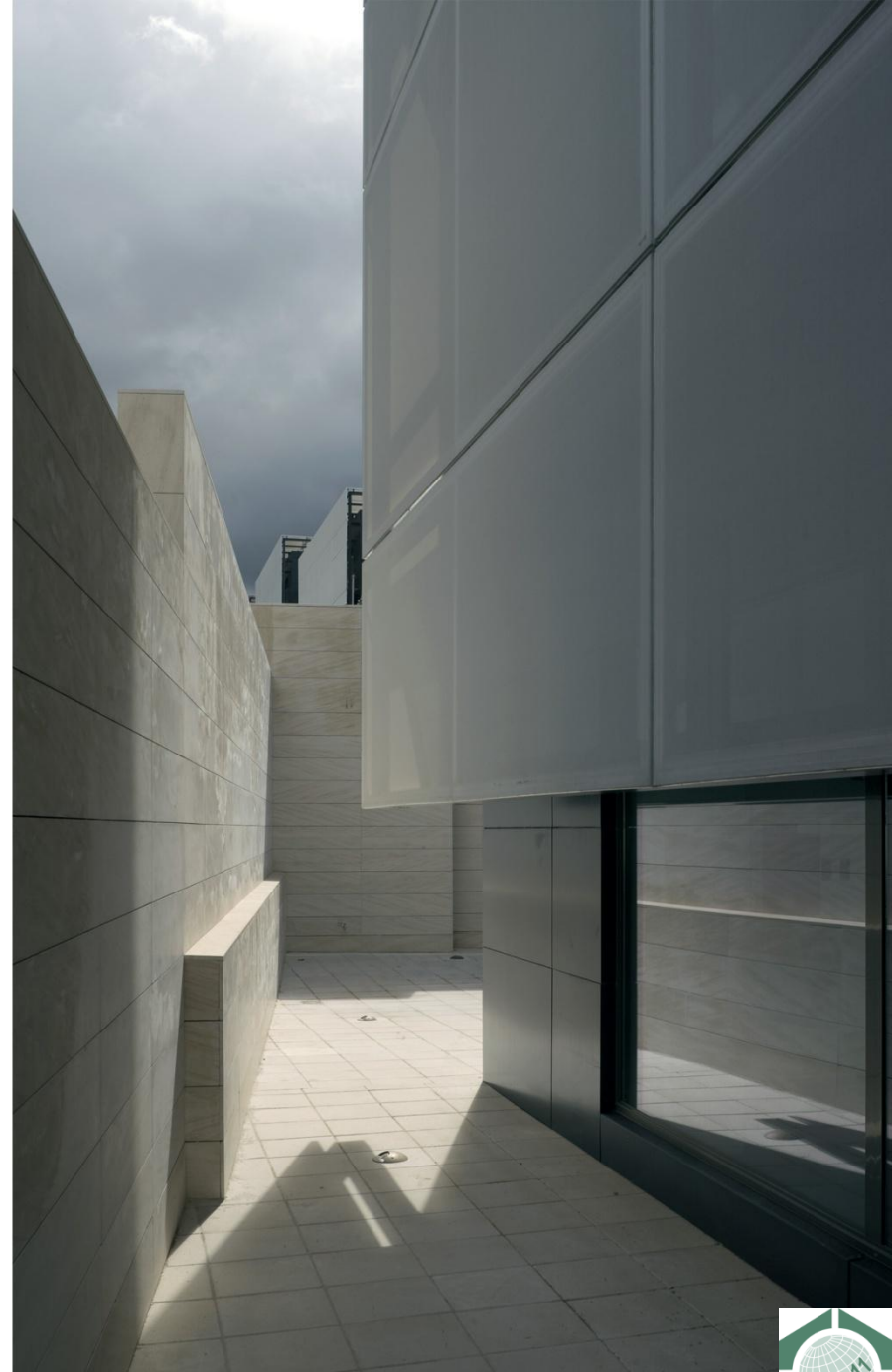


NE facade



Textile tensed screens. Transparencies











Assessment Process

The Assessment process with **VERDE** evaluated that areas:

- Site Selection
- Energy and Atmosphere
- Natural Resources
- Indoor Quality
- Service Quality
- Social and Economic Aspects



VERDE evaluation

Energy demand has been calculated with CALENER, a official tool for the Spain Energy certification. The total consumption for utilities on use is 112,7 kWh/m² y.



The Tripark Office building presents a reduction of almost 25% in water consumption for the building's use over the consumption VERDE stipulates as a reference.

VERDE evaluation

Indoor quality:

- Enhanced of the lighting quality, both artificial and natural.
- Access to exterior views from workspaces
- Reductions of noise with good sound insulation



Economy aspects

Although the building construction cost is above average, the use cost is significantly reduced due to savings made during the use of both water consumption and energy consumption

VERDE Result

Evaluación del proyecto Edificio de Oficinas y Garaje “Las Rozas Business Campus-Fase II”, ESPAÑA

Resultados de la valoración basados en la documentación aportada de la fase de Diseño.

Fase del proyecto
(Según Archivo Regional)

Fase de
Diseño

Este es un proyecto de nueva construcción, Tiene un ciclo de vida estimado de 50 años, con los siguientes usos: Oficinas con Aparcamientos ubicado en La Rozas de Madrid, ESPAÑA

EVALUACIÓN

Resultados de la evaluación Relativa



IMPACTO ABSOLUTO

